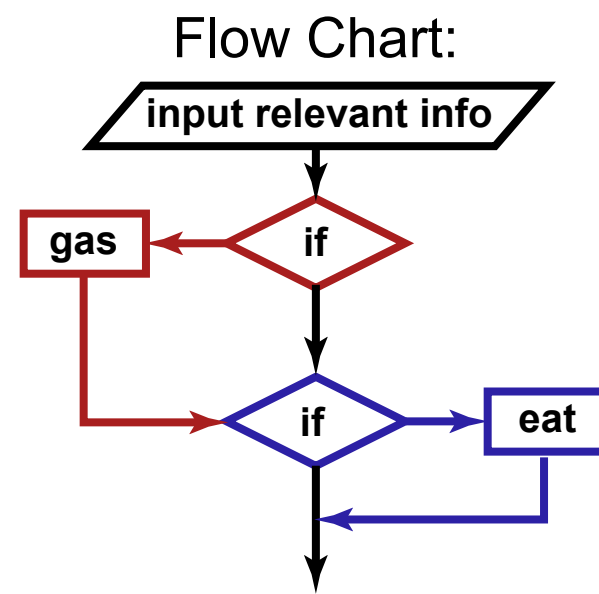
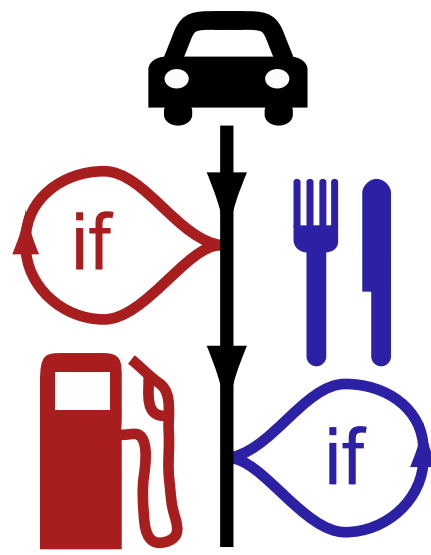


if-if statements:
choose any
“pit-stops”
or none



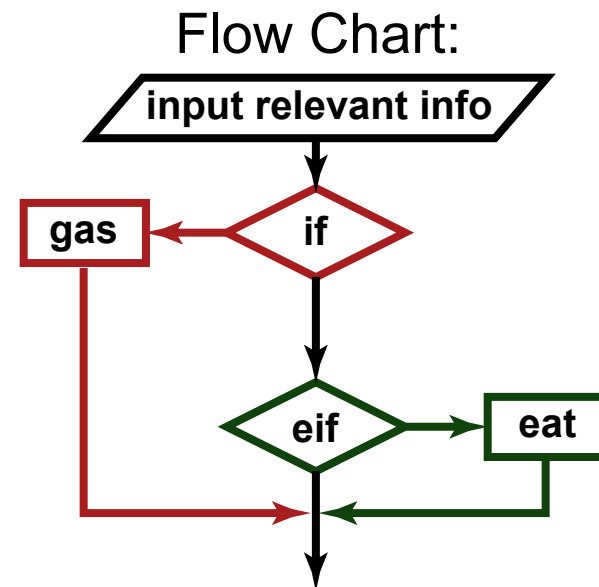
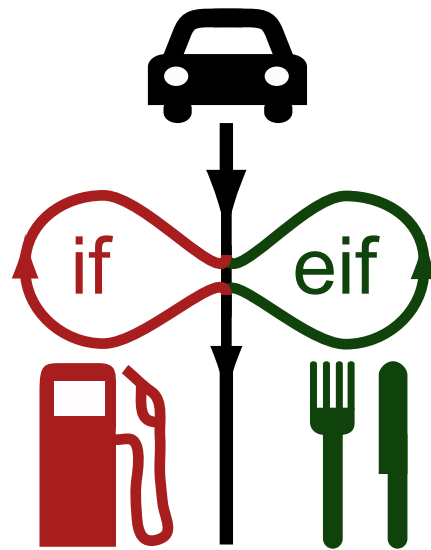
Python Code:

```

11 gas_fill = input("Input fuel-guage read:")
12 stomach_fill = input("Input stomach fullness:")
13 if gas_fill < 0.25:
14     tank_empty = 1.0 - gas_fill
15     gas_needed = tank_volume * tank_empty
16     gas_fill = gas_fill + gas_needed
17 if stomach_fill < 0.1:
18     stomach_empty = 1.0 - stomach_fill
19     food_needed = tank_volume * stomach_empty
20     stomach_fill = stomach_fill + food_needed

```

if-eif statements:
choose one
“pit-stop”
or none



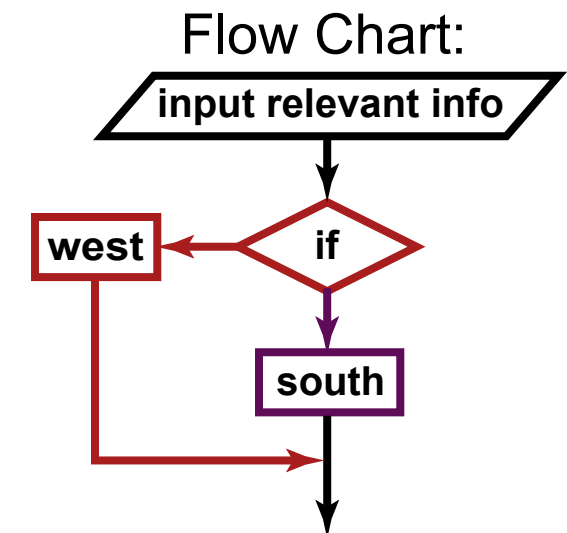
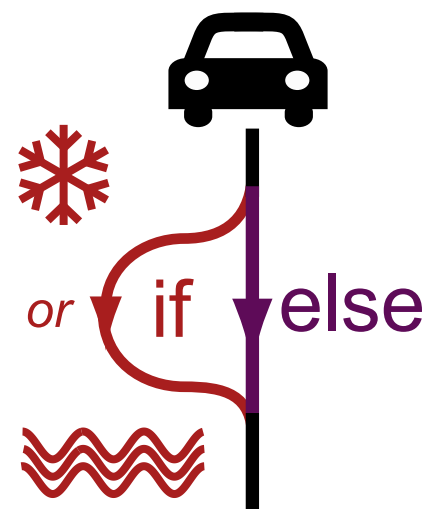
Python Code:

```

11 gas_fill = input("Input fuel-guage read:")
12 stomach_fill = input("Input stomach fullness:")
13 if gas_fill < 0.25:
14     tank_empty = 1.0 - gas_fill
15     gas_needed = tank_volume * tank_empty
16     gas_fill = gas_fill + gas_needed
17 eif stomach_fill < 0.1:
18     stomach_empty = 1.0 - stomach_fill
19     food_needed = tank_volume * stomach_empty
20     stomach_fill = stomach_fill + food_needed

```

if-else statements:
choose
“detour”
or “default”



Python Code:

```

51 speed_limit = input("Input speed limit")
52 snow_height = input("Input inches of snow:")
53 rain_height = input("Input inches of rain:")
54 if snow_height > 6 or rain_height > 12:
55     car_direction = west
56     car_speed = speed_limit
57 else:
58     car_direction = south
59     car_speed = speed_limit - rain_height

```