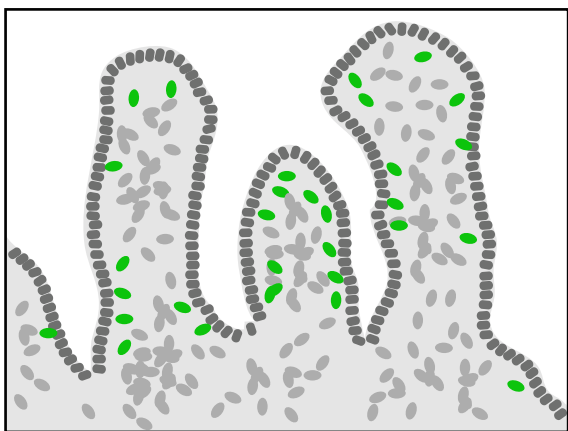


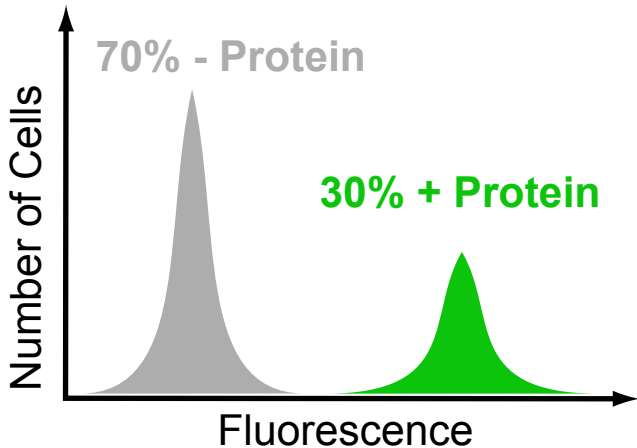
**Fluorophore: "signaller"**  
*gives a color to the "detected" cell/protein*

**Antibody: "detector"**  
*can bind any protein of interest*

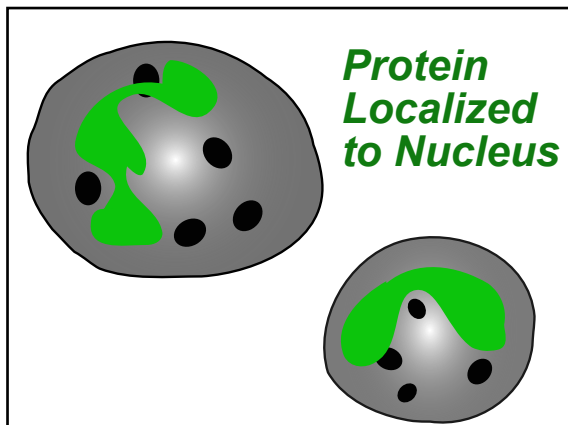
**Histology:**  
*protein/cell distribution in tissue*



**Flow Cytometry:**  
*% cell-type and protein expression*



**Microscopy:**  
*protein localization w/n cell*



**Western-Blot:**  
*intracellular protein concentration*

